

Year 9 Options 2024

Aspiration - Integrity - Pride



Key points

- All subjects we offer are valuable
- All combinations chosen are good combinations
- Maintaining a broad and balanced curriculum is of the utmost importance
- Excellent attendance is vital to maximise outcomes

Why a humanities and a language?

Oxford University research:

- 1) Humanities graduates develop resilience, flexibility and skills to adapt to challenging and changing labour markets.
- 2) Humanities subjects open a path to success in a wide range of employment sectors.
- 3) The skills developed by studying humanities, such as communication, creativity and working in a team, are “highly valued and sought out by employers”.



Why a humanities and a language?

Learning a language:

- gives students a professional advantage in a globalised world
- can increase job opportunities
- gives a better insight into people and their different cultures
- evidence suggests it heightens the brain's plasticity leading to Students increased cognitive flexibility and adaptability.



Grading structure

GCSE	Btec
Grade 9	L2 Distinction*
8	
7	L2 Distinction
6	L2 Merit
5	
4	L2 Pass
3	L1 Distinction
2	L1 Merit
1	L1 Pass
U	U

Compulsory subjects

English Language

English Literature

Maths

Science

PE (core PE only - practical - no exam)

PSHE (no exam)



Qualification types

GCSEs

- Suitable for progression to A level, T Level, BTEC, Apprenticeships
- Examination based
- Exam is usually 100% (not in every case)
- Greater written content

Qualification types

GCSEs

- Suitable for progression to A level, T Level, BTEC, Apprenticeships
- Examination based
- Exam is usually 100% (not in every case)
- Greater written content

Vocational

- Suitable for progression to A level, T Level, BTEC, Apprenticeships
- Greater practical content
- Exam is typically 40%
- Less written content but excellent organisation and consistency is essential.



A Level requirements with local providers

A Level	English	Maths	Science	Other
English	5+	5+		Minimum of 5 grade 5+
Physics	5+	7+	7+	
Engineering	5+	5+	5+	
Music	5+	5+		An audition
Art	5+	5+		5+ Art
Drama	5+			Minimum of 5 grade 5+ Drama beneficial but not essential

A Levels and University entry requirement examples

Degree	A Levels	Including	GCSEs
Accounting & Finance	A*AB	A in Maths	No specific subjects
Biochemistry	AAA	Chemistry and another core science or Maths	
Music	AAB	Music of Grade 8 theory	
Engineering Design	A*AA	Maths and a science-related subject	
Law	A*AA	No specific subjects	
Film & Television	AAB	No specific subjects	





- Employers want people with **good Maths and English GCSEs**
- It is a requirement that a young person who hasn't yet achieved a Grade 4 in Maths and English will need to continue to do them until they are 18.

13 subjects to choose from

GCSEs	Vocational
Art	Hospitality & Catering
Computer Science	Drama
Geography	Engineering
History	Health & Social Care
Religious Education	Media Studies
Spanish	Music
	Sport



Unsure at present

Select a balance of subjects such as the English Baccalaureate range

The English Baccalaureate (EBacc)

A set of individual qualifications. Not a qualification in it's own right.

English

Maths

Two Sciences

Geography or History

A Modern Foreign Language

The English Baccalaureate (EBacc)

Research from 300 schools found that students following the English Baccalaureate subjects were:

- More likely to achieve good GCSEs in English and maths
- More likely to be taking an A level or other level 3 qualification after the age of 16
- Less likely to have dropped out of education after the age of 16

Frequently asked questions

1. Should I choose GCSEs or Btecs?
2. How many do I have to choose?
3. Do I have to choose reserve subjects?
4. Am I guaranteed to get my choices?
5. Who will be the teacher?
6. What do I do if I really can't decide?
7. Can I change my mind later?



Timeline and support

1. Assembly
2. This evening
3. Choices finalised by parents and students by Sunday 10 March
4. Quality assurance: March to June
5. Individual discussions as required
6. Students and parents will be informed of allocations in July

The subjects



English Language

How is it assessed?

Paper 1 (1h 45m)	Paper 2 (1h 45m)
Fiction Reading: 40 Marks	Non-Fiction Reading: 40 Marks
Fiction Writing: 40 Marks	Non- Fiction Writing: 40 Marks

English Literature

How is it assessed?

Paper 1 (1h 50m)	Paper 2 (2h 15m)
Shakespeare: 34 Marks	Modern Drama: 34 Marks
Dickens: 30 Marks	Anthology Poetry: 30 Marks
* Closed-text exams. All texts must be learned and key aspects memorised	Unseen Poetry: 24 Marks
	Unseen Poetry Comparison: 8 marks

GCSE Maths

How is it assessed?

Paper 1	Paper 2	Paper 3
Non – Calculator Paper	Calculator Paper	Calculator Paper
1 hour 30 minutes	1 hour 30 minutes	1 hour 30 minutes

Combined Science

How is it assessed?

Paper 1 (1hr 15) Higher or
Foundation Tier

Biology (B1)

Chemistry (C1)

Physics (P1)

Paper 2 (1hr 15) Higher or
Foundation Tier

Biology (B2)

Chemistry (C2)

Physics (P2)

Art and Design



Course work unit : 60% of overall grade

This consists of 2 full projects and includes a wide range of painting, drawing and printing techniques

Controlled test : 40% of overall grade

*Starts in January of year 11 and ends in May.
Students complete a full project on a chosen theme from a choice of 8*



BTEC Performing Arts: Drama



Component 1:

Exploring the
Performing Arts

Component 2:

Developing Skills
and Techniques
for the Performing
Arts

Component 3:

Responding to a
Brief



BTEC Performing Arts: Drama



Component 1:

Assessment: 12
page written
document about
one of the
performances
studied

Component 2:

Assessment:
Rehearsal and
performance
videos, supported
with written notes.

Component 3:

3x written logs
Video of final
performance



BTEC Performing Arts: Drama



Gives students in depth knowledge on professional performances are made, and how to make them.

Practical experience of script work and creating theatre.

Develops confidence, oracy, and teamwork skills.



Hospitality and Catering

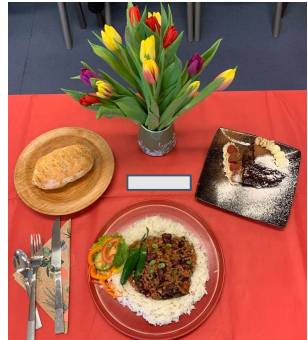
What do we teach?

The hospitality and catering industry including different sectors, jobs and opportunities



Hospitality operations including organisation, safety, ordering and stock control

Health and safety in the hospitality and catering industries



How to plan, prepare, cook and present a balanced meal

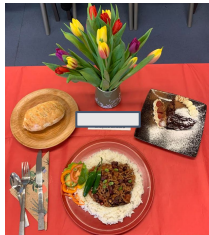
Aspiration - Integrity - Pride

Level 1/2 Award in Hospitality and Catering

How is it assessed?

Unit 1	Unit 2
Written exam (40%)	Coursework (60%)
External Assessment (examination)	Controlled Internal Assessment

Who is this course for?

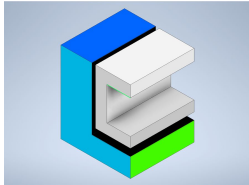
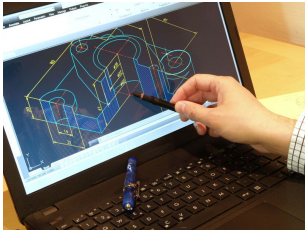
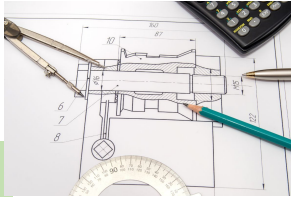


Aspiration - Integrity - Pride

Engineering

What do we teach?

Computer aided design and technical drawing skills



Product evaluation and life cycle analysis



Materials and practical skills

Aspiration - Integrity - Pride

NCFE Engineering

Unit 1

Written exam (40%)

External Assessment
(examination)

Unit 2

Coursework (60%)

Controlled Internal
Assessment



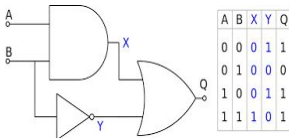
Who is this course for?

Aspiration - Integrity - Pride

GCSE Computer Science

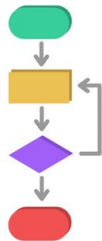
Binary to Hexadecimal

1011 0111 → B7₁₆
 ↓ ↓
 11 → B 7
 1011101010 → 2EA₁₆



```

Test.py x
1  number = 5
2  sum = 0
3  i = 0
4
5  while (i < number):
6      sum = sum + i
7      i = i+1
8
9  print(sum)
10
    
```



Unit 1

Written exam (50%)

Computer systems

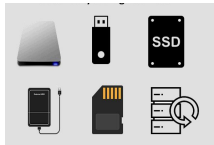
Hardware
 Storage
 Networks
 Software

Unit 2

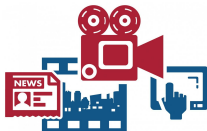
Written exam (50%)

Algorithms and Programming

Algorithms
 Programming
 Logic circuits



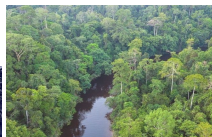
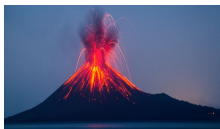
Media Studies



Component 1	Component 2	Component 3
Coursework (30%)	Coursework (30%)	Controlled Assessment (40%)
Internal Assessment	Internal Assessment	External Assessment
Students learn about how a variety of media products are made in order to create meaning for an audience. Students can select their own products to analyse.	Students learn the equivalent of Photoshop skills in order to be able to produce a media product, such as a gaming or fashion magazine.	Students are given a fictional brief by the exam board to create a suitable media product to target and appeal to a specific audience.

GCSE Geography

What do we teach?



Physical
geography

Human
geography

Aspiration - Integrity - Pride



GCSE Geography

Why choose geography?

Helps you make sense of the world around you.

Creates a passion for the world around you.

It is one of the most relevant subjects you can study: migration, climate change, energy are all very current issues.

Geography

'It (geography) helps you understand the complexity of our world, appreciating the diversity of cultures that exists within and across continents'.

Barack Obama, former President of the USA

'So many of the world's current problems boil down to geography and need the geographers of the future to help us understand them'.

Sir Michael Palin, former president of the Royal geographic Society

You learn transferable skills that will help you with many A Level subjects



GCSE Geography – 100% exam based

How is it assessed?

Paper 1	Paper 2	Paper 3
Living with the physical environment	Challenges in the human environment	Geographical applications
Natural Hazards – weather and tectonics	Urban Issues and Challenges - migration and challenges	Issue Evaluation
Living World – rainforests and deserts	Changing Economic World - development and growth	Fieldwork – familiar and unfamiliar
Physical Landscapes – rivers and coasts	Challenges of Resource Management – with a focus on food	
1 hour 30	1 hour 30	1 hour 30

Aspiration - Integrity - Pride



History



The People's Health c.1250-present



Viking expansion c.750-c.1050



The Elizabethans, 1580-1603



Living under Nazi Rule, 1933-1945



History around us: Big Pit



GCSE History

Why choose History?

You will learn how to handle evidence to make informed decisions

You will learn to locate and sift fact from fiction

You will learn to communicate your ideas and thoughts in a way that makes sense to others

You will learn about people - their motives, interactions and perspectives

You will learn about different countries, societies and cultures and learning about the past can help make sense of the world around us

History

It is relevant to a range of A levels and careers



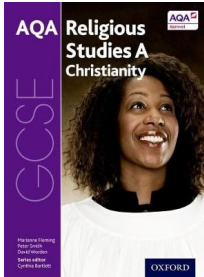
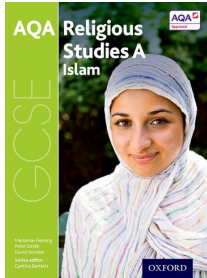
GCSE History – OCR B

How is it assessed?

Paper 1 - Thematic and British Depth Study	Paper 2 - History around us	Paper 3 - Period Study and World Depth Study
<i>The People's Health</i> c1250-present (20% of total)	<i>Big Pit</i> (20% of total)	<i>Viking expansion</i> c.750-c.1050 (20% of total)
<i>The Elizabethans,</i> 1580-1603 (20% of total)	1 hour	<i>Living under Nazi Rule,</i> 1933-1945 (20% of total)
1 hour 45		1 hour 45



Religious Studies



The study of religions: beliefs, teachings and practices

Christianity

Islam

Thematic studies

Relationships and families

Religion, crime and punishment

Religion and life

Religion, peace and conflict



Religious Studies

Why choose Religious Studies?

You will develop the skills needed to understand, interpret and evaluate texts

You will learn to articulate your ideas and thoughts clearly, coherently and respectfully

You will learn about the multicultural society that we live in today

RS

You will learn about different religions and worldviews

It is relevant to a range of A levels and careers

You will consider and debate challenging questions about meaning and purpose in life, beliefs about God, issues of right and wrong and what it means to be human



GCSE Religious Studies

How is it assessed?

Paper 1 - The study of religions: beliefs, teachings and practices	Paper 2 - Thematic studies
<i>Christianity and Islam</i>	<i>Relationships and families</i> <i>Religion, crime and punishment</i> <i>Religion and life</i> <i>Religion, peace and conflict</i>
1 hour 45	1 hour 45



Music

Pearson BTEC Level 1/Level 2 Tech Award in Music Practice

Component number	Component title	GLH	Level	How assessed
1	Exploring Music Products and Styles	36	1/2	Internal
2	Music Skills Development	36	1/2	Internal
3	Responding to a Music Brief	48	1/2	External synoptic



GCSE Spanish



What do we teach?

My personal world	Lifestyle and wellbeing	My neighbour-hood	Media and technology	Studying and my future	Travel and tourism
family	mental & physical well-being	places in town	TV and film	school	transport
friends	sports	shopping	music	equality	accommodation
relationships	food and drink	environmental issues	social media and gaming	future opportunities	tourist attractions

Aspiration - Integrity - Pride

GCSE Spanish



Why languages?



Academic skills – learning a language improves working memory, retention and recall speed, ability to multi-task and use logic to solve problems.



Travel – feeling confident to communicate in another language makes travel easier and more fun. (e.g. ordering food, understanding signs, asking for information, meeting new people).



If you talk to a man in a language he understands, that goes to his head. If you talk to him in his language, that goes to his heart.
Nelson Mandela



Transferable skills – understanding how other languages work develops a deeper understanding of your own language. Linguists are excellent communicators who are able express and develop views and ideas.







Life-long learning – learning about other countries and cultures, expands your world views, develops understanding of different beliefs and backgrounds. It opens the door to new cultures, art, music, dance, fashion and film



MFL (Spanish)

How is it assessed?

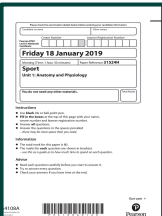
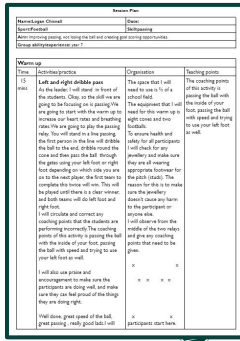
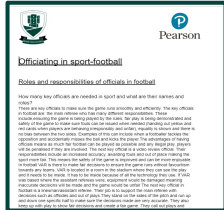
			
Paper 1 Speaking	Paper 2 Listening	Paper 3 Reading	Paper 4 Writing
Reading aloud Transactional role play. Picture description and follow on conversation.	Multiple choice, short answer open question responses. Dictation.	Multiple choice, short answer open question responses. Translation into English.	Picture description (F only) 2 open response writings. Translation from English into Spanish





Finley Rogers Football Main activity - progression

Sport



Sport

Component 1	Component 2	Exam Paper
Task 1- Types of sport and different types of provision	Task 1- Components of fitness	1 hour and 30 mins (Y11)
Task 2- Technology in sport	Task 2 - <u>Practical assessment of 3 different skills</u>	
Task 3- Written warm up plan <u>Practical assessment leading the warm up plan</u>	Task 3 - Rules and regulations / role of officials	
	Task 4 - Written session plan <u>Practical assessment delivering session plan</u>	



Health & Social Care

The process in MCAS

If you do not have the MCAS app:

- a) Please download it and use it if you can. We can support with this.
- b) For any students unable to complete the process via the app, we will complete the process with them in school.
- c) Complete by Sunday 10 March

For support in setting up MCAS please contact our IT Team using:

support@blaisehighschool.co.uk



Dashboard Homepage and Launchpad

YOU ARE HERE: 🏠 Dashboard

- Dashboard
- Data Collection Form
- Announcements
- Attendance
- Behaviour
- Detentions
- Reports
- Timetable
- Academic Calendar
- Products
- Clubs
- Trips
- Options
- Dinners
- Outstanding Payments

Attendance More		
Period	Subject	Mark
AM	Tutor Group	✓
TTRP	TTRP	✓
1	Science	✓
2	Spanish	✓
3	Geography	?
PM	Tutor Group	?
4	English	?
5	Maths	?

Dinner Detail More		
Date	Meal Details	Cost
09/02/2024	Purchase Meal Deal x 1 (ID:1269794)	£-2.60
08/02/2024	Purchase Crisps x 1 (ID:1268708)	£-1.00
08/02/2024	Purchase Tray Bake x 1 (ID:1268315)	£-1.00
07/02/2024	Purchase Radnor splash 500ml x 1 (ID:1267406)	£-1.00
07/02/2024	Purchase Tray Bake x 1 (ID:1267220)	£-1.00

Timetable More	
What is Kyle up to?	

Announcements More	
No Announcements data found	

Options More			
Setup Name	Timeframe	Status	View Only
Year 9 options 23-24	01/02/2024 - 29/03/2024	Submitted	Editable

Clubs & Trips	
No Clubs data found	

Dinner Money	
Dinner Balance Summary	
Credit Balance Summary : £ 1.95	
Deposit Amount : £	<input type="text"/>
Add to Basket	

Behaviour More		
Date	Description	Status
07/02/24	A - Green Point in lesson	✓
07/02/24	A - Green Point in lesson	✓

Detentions More	
No Detentions data found	

Reports More	
Published	Report
02/02/2024	Bi-Weekly Behaviour Report (2023 - 2024 Unit 2 23/24)
19/01/2024	Bi-Weekly Behaviour Report (2023 - 2024 Unit 2 23/24)
03/01/2024	Y9 Unit 1 Assessments 23-24 (2023 - 2024 Unit 2 23/24)
05/12/2023	Bi-Weekly Behaviour Report (2023 - 2024 Unit 1 23/24)
05/12/2023	Bi-Weekly Behaviour Report (2023 - 2024 Unit 1 23/24)

Thank you for attending

Heads of subject, Heads of Year, and other senior staff will be remaining for any questions